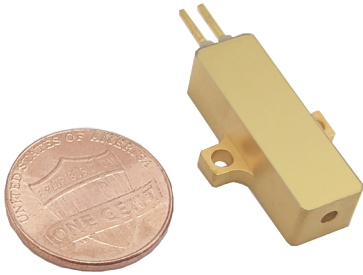


High Repetition Rate 1535nm Erbium Glass Lasers



High repetition rate 1535nm Erbium glass lasers are RealLight's self-developed eye-safe lasers operating at 1-5kHz. Utilizing the semiconductor laser packaging technology, these lasers feature compact size, sufficient performance stability and excellent beam quality.

Key Features

- ◆ Passively Q-Switched, Er:Glass
- ◆ Eye-safe
- ◆ Extremely light
- ◆ Wide operating temperature range

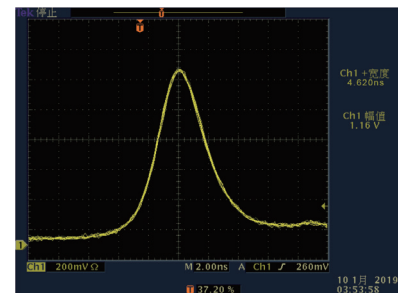
Applications

- Obstacle avoidance radar
- Meteorological radar
- Laser rangefinder

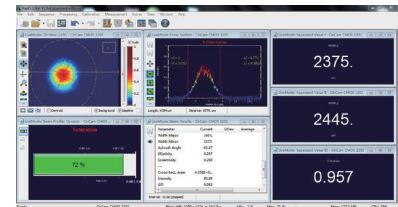
Technical Specifications

Wavelength (nm)	1535		
Pulse energy (μJ)	50	20	10
Repetition rate (kHz)	1	2.5	5
Pulse width (typ., ns)	5	6	8
Operating current (A)	5		
Operating voltage (V)	2		
Beam full divergence (typ., mrad)	20	17	18
Beam profile	TEM ₀₀		
Energy Stability (RMS)	3%		
Weight (g)	10		
Dimensions (L×W×H,mm)	25x8x7		
Operation temperature (°C)	-40~65		
Storage temperature (°C)	-45~80		

All the data in the above table are the typical values obtained from the tests at room temperature of 25°C, and the final data is subject to the final test report.



Typical Pluse



Beam Profile

Order Information

Wavelength (nm)	Part Number	Repetition rate (kHz)	Pulse width (ns)	Pulse energy (μJ)	Dimensions (mm)
1535	R1535-1-5-50-F2A	1	5	50	25x8x7
	R1535-2.5-6-20-F2A	2.5	6	20	25x8x7
	R1535-5-8-10-F2A	5	8	10	25x8x7

Mechanical Drawings (in mm)

