

HQF Series Lamp-pumped Q-switched Nanosecond Laser Accessories



For customers in the aesthetic medicine industry, Reallight can provide accessories such as articulated arm, power supply, and control screen to avoid problems caused by the incompatibility between the laser and the accessories.

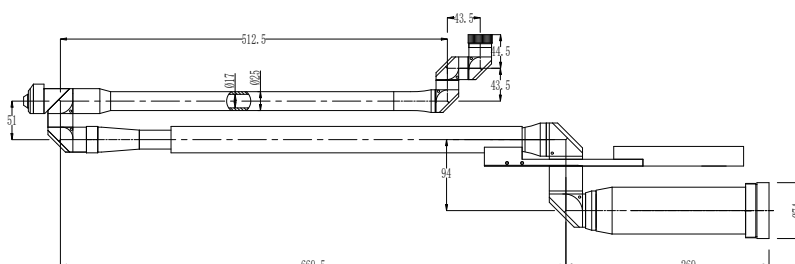
Articulated arm



Parameters of the articulated arm

Aperture	Φ17
Total Length	1.7m
Number of joints	7 Joint unit
Weight	5.5kg
Mirror reflectivity	>99.7%
Reflection wavelength	1064nm, 532nm, 650nm
Damage threshold	>5J/cm ²
Material	6061 aluminium alloy
Beam wander	±0.5mm

Mechanical Drawings (in mm)



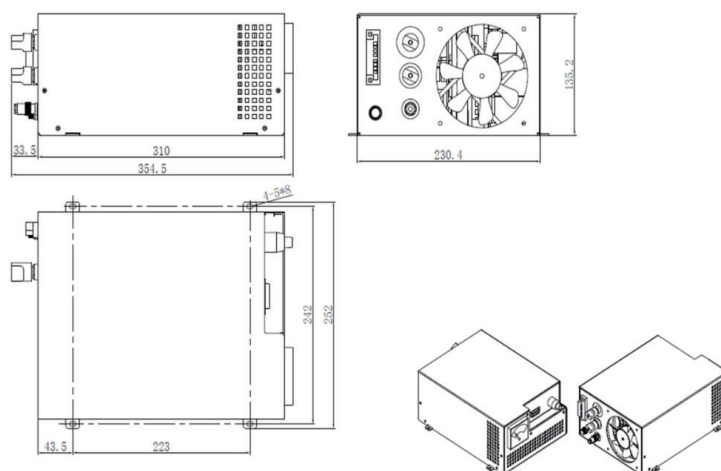
Power supply



Parameters of the power supply

Input voltage	220V/110V±10%AC, 50~60Hz
Maximum output power	1000W
Maximum output voltage	1000V
Output frequency	1-10Hz
Load capacitance	200μF/1400V
Q-switch delay adjustment range	20~600μS
Pockels cell trigger signal	-400V
Dimension	354.5*230.4*135.2mm

Mechanical Drawings (in mm)



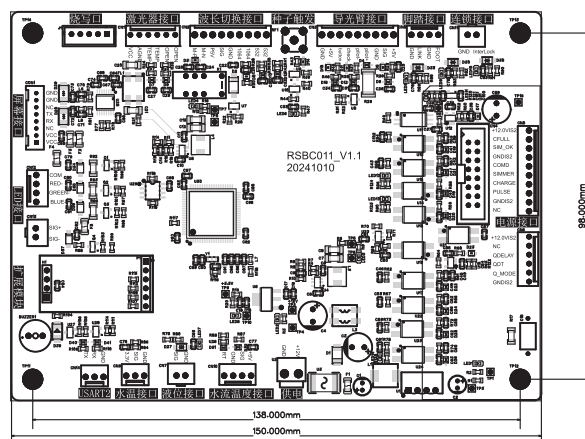
Control screen and control board



Parameters of the control screen & control board

Control screen size	8 inches or 10 inches
Control board size	150*110mm

Mechanical Drawings (in mm)



Control board