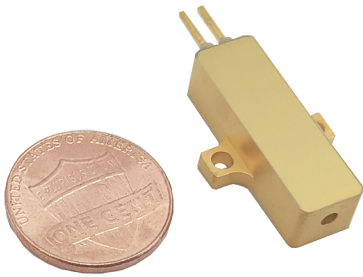


# High Repetition Rate 1535nm Erbium Glass Lasers



High repetition rate 1535nm Erbium glass lasers are RealLight's self-developed eye-safe lasers operating at 1-5kHz. Utilizing the semiconductor laser packaging technology, these lasers feature compact size, sufficient performance stability and excellent beam quality.

## Key Features

- ◆ Passively Q-Switched, Er:Glass
- ◆ Eye-safe
- ◆ Extremely light
- ◆ Wide operating temperature range

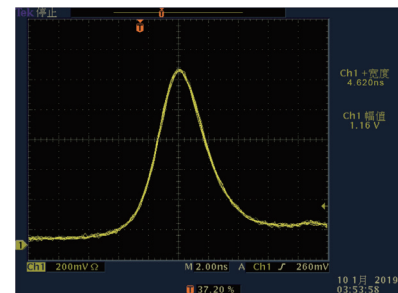
## Applications

- Obstacle avoidance radar
- Meteorological radar
- Laser rangefinder

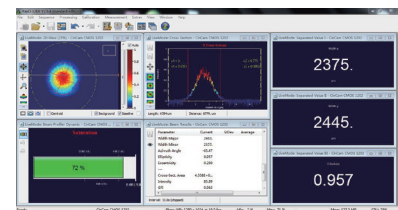
## Technical Specifications

Wavelength ( nm )	1535		
Pulse energy ( $\mu$ J )	50	20	10
Repetition rate ( kHz )	1	2.5	5
Pulse width ( ns )	5	6	8
Operating current ( A )	5		
Operating voltage ( V )	2		
Beam diameter ( mm )	0.3		
Beam full divergence ( typ., mrad )	16	17	18
Beam pointing	<math> < 0.2^\circ </math>		
Beam profile	TEM <sub>00</sub>		
Energy Stability ( RMS )	3%		
Weight ( g )	10		
Dimensions ( L×W×H,mm )	25×8×7		
Operation temperature ( $^\circ$ C )	-40~65		
Storage temperature ( $^\circ$ C )	-55~80		

All the data in the above table are the typical values obtained from the tests at room temperature of 25  $^\circ$ C , and the final data is subject to the final test report.



Typical Pulse



Beam Profile

## Order Information

Wavelength ( nm )	Part Number	Repetition rate ( kHz )	Pulse width ( ns )	Pulse energy ( $\mu$ J )	Dimensions ( mm )
1535	R1535-1-5-50-F2A	1	5	50	25x8x7
	R1535-2.5-6-20-F2A	2.5	6	20	25x8x7
	R1535-5-8-10-F2A	5	8	10	25x8x7

## Mechanical Drawings (in mm)

