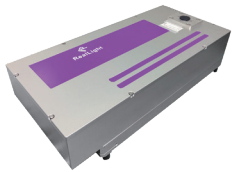


# HQF Series Lamp-pumped Picosecond MOPA Laser Accessories



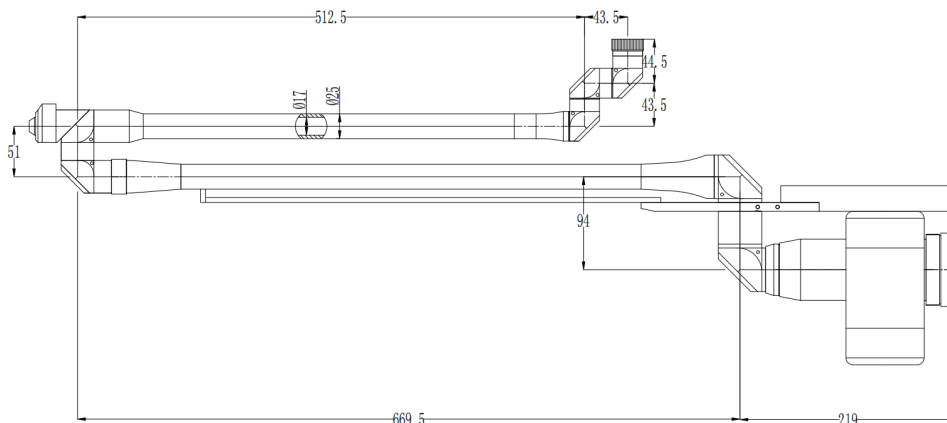
For customers in the aesthetic medicine industry, RealLight can provide accessories such as articulated arm, power supply, and control screen to avoid problems caused by the incompatibility between the laser and the accessories.

## Articulated arm



Parameters of the articulated arm	
Aperture	Φ17
Total Length	1.67m
Number of joints	7 Joint unit
Weight	5.3kg
Mirror reflectivity	>99.7%
Reflection wavelength	1064nm, 532nm, 650nm
Damage threshold	>5J/cm <sup>2</sup>
Material	6061 aluminium alloy
Beam wander	±0.5mm

## Mechanical Drawings (in mm)

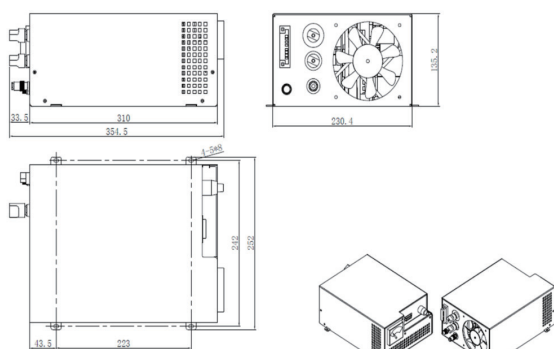


# Power supply and control board for 500ps laser

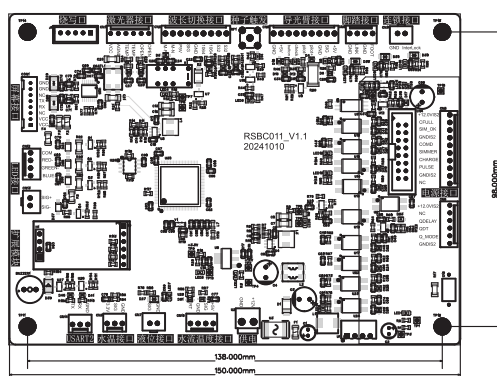


Parameters of the power supply and control board for 500ps laser	
Input voltage	220V±10%AC, 50~60Hz
Maximum output power	1000W
Maximum output voltage	1000V
Output frequency	1-10Hz
Load capacitance	200μF/1400V
Power supply size	354.5*230.4*135.2mm
Control board size	150*110mm
Control screen size	8 inches or 10 inches

## Mechanical Drawings (in mm)



Power supply



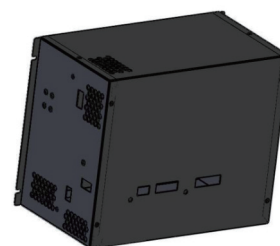
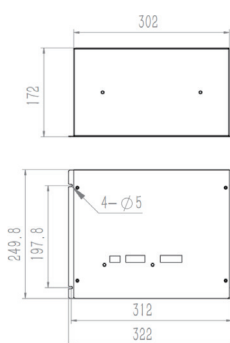
Control board

# Power supply and control screen for 350ps laser



Parameters of the power supply and control screen for 350ps laser	
Input voltage	220V±15%AC, 50~60Hz
Maximum output power	1000W
Maximum output voltage	1000V
Output frequency	1-10Hz
Load capacitance	200μF/1400V
Power supply size	322*249.8*172mm
Control screen size	8 inches or 10 inches

## Mechanical Drawings (in mm)



Power supply with integrated control board