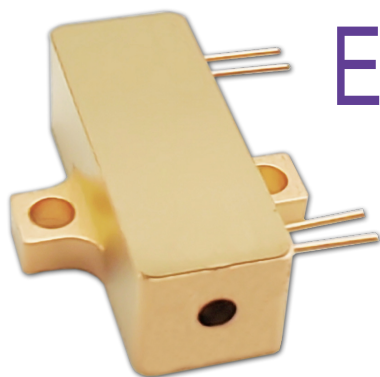


# High Repetition Rate 1535nm Erbium Glass Lasers with PIN



High repetition rate 1535nm Erbium glass lasers with photodetector (PIN) are Reallight's self-developed eye-safe lasers operating at 1-5kHz. This series of lasers are equipped with integrated photodetector(PIN), which is able to provide PD output signal. Utilizing the semiconductor laser packaging technology, these lasers feature compact size, sufficient performance stability and excellent beam quality.

## Applications

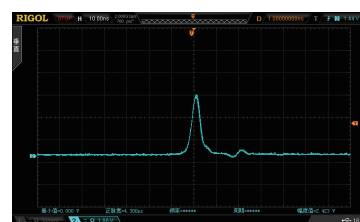
- Obstacle avoidance radar
- Meteorological radar
- Laser rangefinder

## Key Features

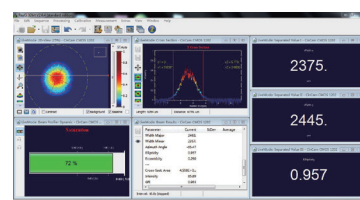
- ◆ Integrated PIN, provides PD output signal
- ◆ Passively Q-Switched, Er:Glass
- ◆ Eye-safe
- ◆ Wide temperature operation

## Technical Specifications

Wavelength ( nm )	1535		
Pulse energy (μJ)	50	20	10
Pulse width (ns)	5	6	8
Repetition rate (kHz)	1	2.5	5
Operating current (A)	5		
PIN amplitude (V@50Ω resistance)	2		
Beam full divergence (typ., mrad)	16	17	18
Beam profile	TEM <sub>00</sub>		
Energy Stability (RMS)	3%		
Weight (g)	12		
Dimensions (L×W×H,mm)	25x8x7		
Operation temperature (°C)	-40~65		
Storage temperature (°C)	-55~80		



PIN signal and amplitude



Beam profile

## Order Information

Wavelength ( nm )	Part Number	Repetition rate (kHz)	Pulse width (ns)	Pulse energy (μJ)	Dimensions (mm)
1535	R1535-1-5-50-F2B	1	5	50	25x8x7
	R1535-2.5-6-20-F2B	2.5	6	20	
	R1535-5-8-10-F2B	5	8	10	

## Mechanical Drawings(in mm)

