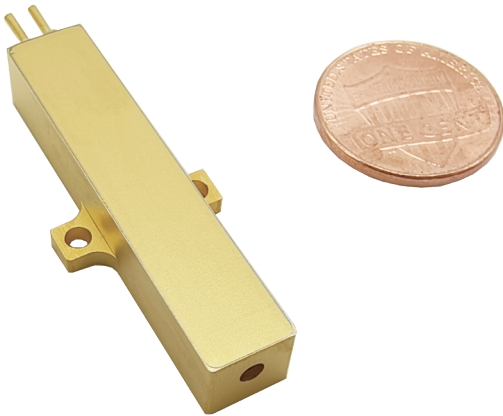


800~1000μJ 1535nm Erbium Glass Lasers



RealLight's 1535nm Erbium glass lasers operate in the eyesafe wavelength regime, have great advantages in applications including laser ranging and LiDAR. This series of lasers feature no tail pulse, stable pulse energy and excellent beam profile. The integrated design of diode-pumped module and laser crystal brings convenience to installation and integration due to the compact size. The output power of this series is up to 1mJ.

Technical Specifications

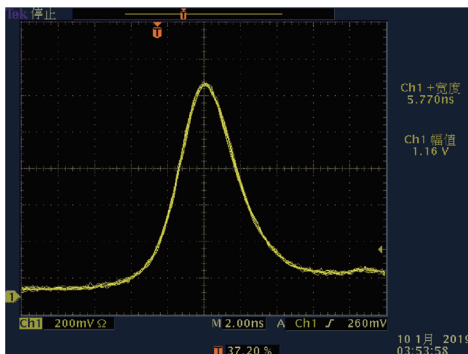
Wavelength (nm)	1535	
Pulse energy (μJ)	800	1000
Pulse width (ns)	8	
Repetition rate (Hz)	10	5
Operating current (A)	30	
Beam full divergence (typ., mrad)	7	
Beam profile	TEM ₀₀	
Energy Stability (RMS)	3%	
Weight (g)	20	
Dimensions (L×W×H,mm)	40x9x7.7	
Operation temperature (°C)	-40~65	
Storage temperature (°C)	-55~80	

Applications

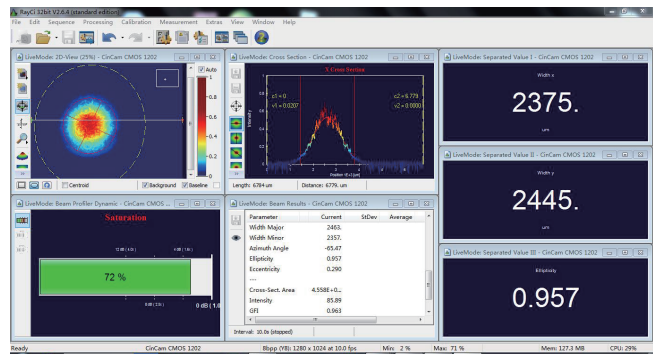
Laser rangefinder
Meteorological radar

Key Features

- ◆ Passively Q-Switched, Er:Glass
- ◆ Eye-safe
- ◆ Extremely light
- ◆ Super compact design
- ◆ Wide operating temperature range



Typical Pluse

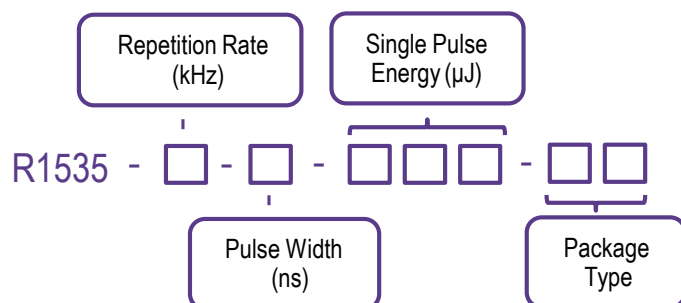


Beam Profile

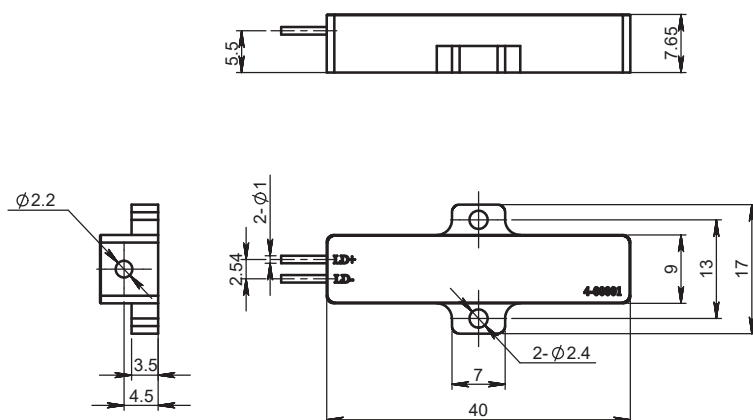
Order Information

Wavelength (nm)	Part Number	Repetition rate (Hz)	Pulse width (ns)	Pulse energy (μJ)	Dimensions (mm)
1535	R1535-0.01-8-800-F4A	10	8	800	40x9x7.7
	R1535-0.005-8-1000-F4A	5	8	1000	40x9x7.7

Part Numbering Schema



Mechanical Drawings (in mm)



F4A Drawing

