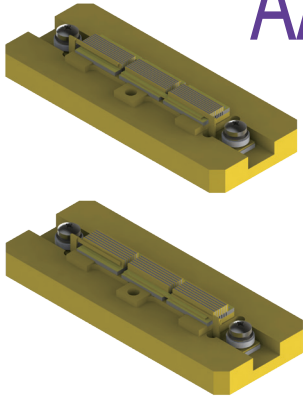


# AA-4 Series Conduction-cooled Diode Laser Array



AA-4 series conduction-cooled diode laser array is developed by Reallight which is used for wide temperature. Its features include high peak power and wide temperature applications.

## Key Features

- ◆ Hard solder package
- ◆ High temperature application
- ◆ High peak power
- ◆ High reliability
- ◆ Dual wavelength integration

## Applications

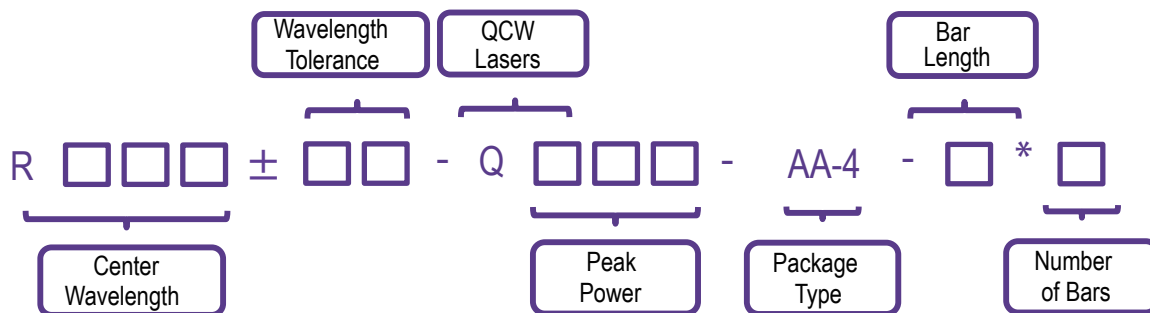
- Pumping source
- Scientific research

## Technical Specifications

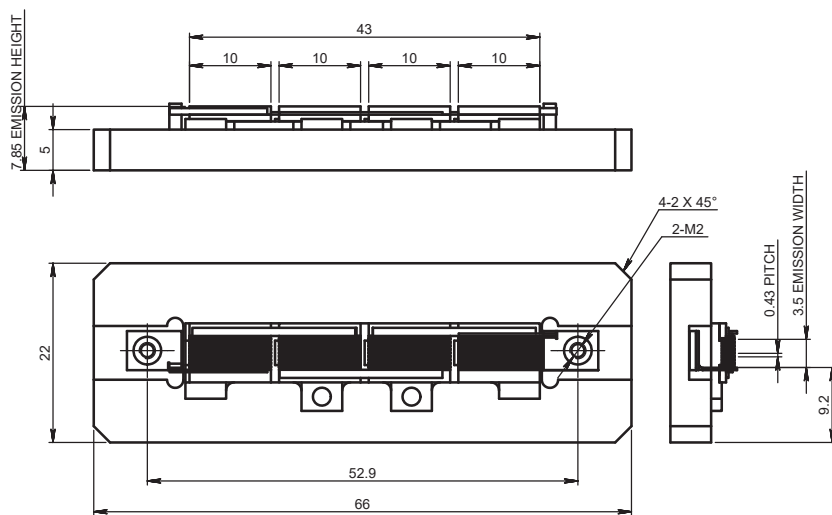
Optical Parameters		
Center Wavelength $\lambda_c$ (nm)	790-812	
Wavelength Tolerance $\delta\lambda_c$ (nm)	±3	
Output Power per Bar (W)	100	200
Number of Bars per Stack	9	7
Bar-to-Bar Pitch (mm)	0.43	0.55
Emission Area (mm×mm)	3.5×43	3.3×43
Stack-to-Stack Pitch (mm)	1	
Number of Stacks	4	
Spectral Width per Wavelength (FWHM) (nm)	≤6	
Fast Axis Divergence Angle (FWHM) (°)	≤40	
Slow Axis Divergence Angle (FWHM) (°)	≤10	
Wavelength Temperature Coefficient (nm/°C)	~0.3	
Electrical Parameters		
EO Conversion Efficiency (%)	≥50	
Threshold Current $I_{th}$ (A)	≤20	≤30
Operating Current $I_{op}$ (A)	100	220
Operating Voltage $V_{op}$ of each Bar (V)	≤2.1	
Duty Cycle (%)	≤0.8%@3600W	≤0.6%@5600W
Pulse Width (μs)	≤300	
Repetition Rate (Hz)	1-25	1-20
Environment Parameters		
Operating Temperature (°C)	-40~65	
Storage Temperature (°C)	-45~85	

1. Wavelengths from 940nm to 960nm available upon request.
2. Custom number of bars, bar-to-bar pitch, and stack-to-stack pitch are available upon request.
3. The installation and wiring can be customized to meet the customer's requirements.

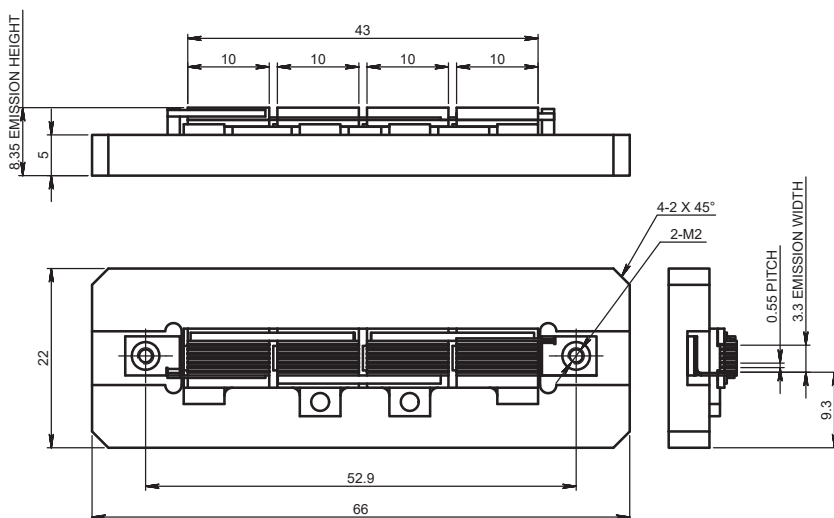
## Part Numbering Schema



## Mechanical Drawings (in mm)



AA\_4x9\_0.43\_100W



AA\_4x7\_0.55\_200W

