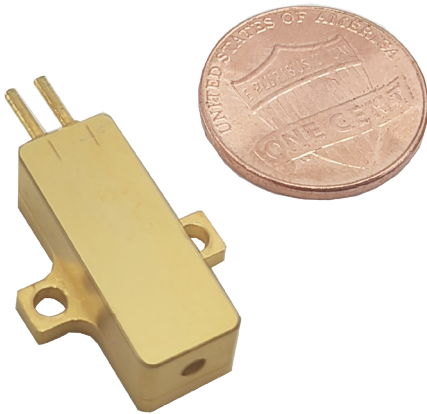


# High Repetition Rate 1535nm Microchip Laser Module



High repetition rate 1535nm microchip laser modules are Reallight's self-developed Er: glass eye-safe lasers operating at 1-10kHz. Utilizing the semiconductor laser packaging technology, these lasers feature compact size, sufficient performance stability and excellent beam quality.

## Key Features

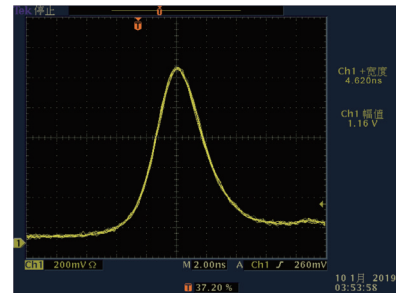
- ◆ Passively Q-Switched, Er:Glass
- ◆ Eye-safe
- ◆ Extremely light (about 8g)
- ◆ Wide operating temperature range

## Applications

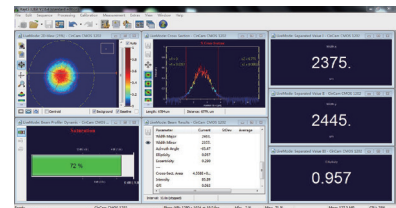
- Obstacle avoidance radar
- Meteorological radar
- Laser range finder

## Technical Specifications

Wavelength ( nm )	1535			
Pulse energy ( $\mu$ J )	60	20	10	5
Repetition rate ( kHz )	1	2.5	5	10
Pulse width ( ns )	5	6	8	10
Operating current ( A )	6			
Operating voltage ( V )	2			
Beam diameter ( mm )	0.3			
Beam full divergence ( typ., mrad )	16	17	18	20
Beam pointing	<0.2°			
Beam profile	TEM <sub>00</sub>			
Weight ( g )	8			
Dimensions ( L×W×H,mm )	21x8x7			
Operation temperature ( °C )	-40~65			
Storage temperature ( °C )	-55~80			



Typical Pulse



Beam Profile

## Order Information

Wavelength ( nm )	Part Number	Repetition rate ( kHz )	Pulse width ( ns )	Pulse energy ( $\mu$ J )	Dimensions ( mm )
1535	R1535-1-5-60-F1A	1	5	60	21x8x7
	R1535-2.5-6-20-F1A	2.5	6	20	21x8x7
	R1535-5-8-10-F1A	5	8	10	21x8x7
	R1535-10-10-5-F1A	10	10	5	21x8x7

## Mechanical Drawings (in mm)

