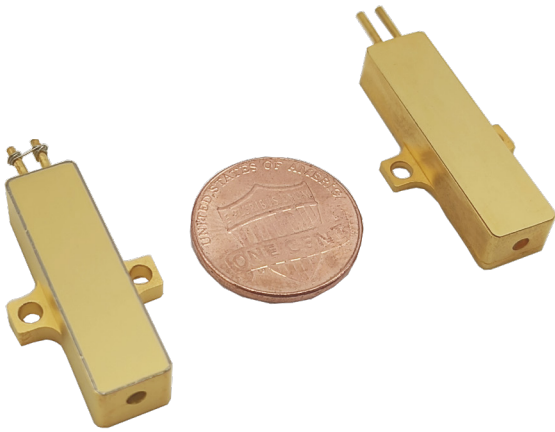


400~500μJ 1535nm Microchip Laser Module



RealLight's 1535nm microchip laser modules operate in the eyesafe wavelength regime, have great advantages in applications including laser ranging and LiDAR. This series of laser modules feature no tail pulse, stable pulse energy and excellent beam profile. The integrated design of diode-pumped module and laser crystal brings convenience to installation and integration due to the compact size. The output power of this series is up to 500μJ.

Technical Specifications

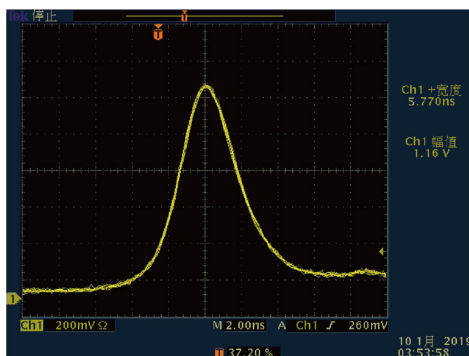
Wavelength (nm)	1535	
Pulse energy (μJ)	400	500
Pulse width (ns)	6	
Repetition rate (Hz)	10	
Operating current (A)	15	20
Beam full divergence (typ., mrad)	8	
Beam profile	TEM ₀₀	
Weight (g)	10	13
Dimensions (W×H×L,mm)	28x8x7	32x8x7
Operation temperature (°C)	-40~65	
Storage temperature (°C)	-55~80	

Applications

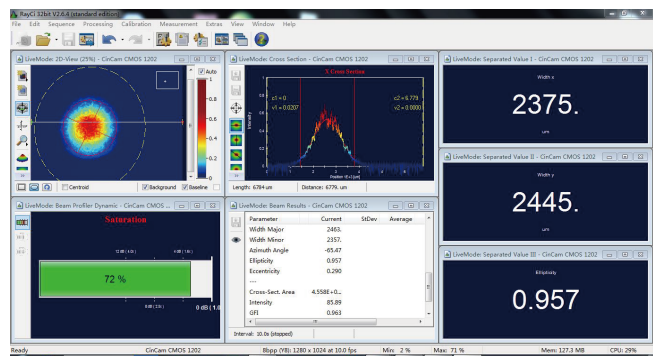
Laser range finder
Meteorological radar

Key Features

- ◆ Passively Q-Switched, Er:Glass
- ◆ Eye-safe
- ◆ Extremely light
- ◆ Super compact design
- ◆ Wide operating temperature range



Typical Pulse

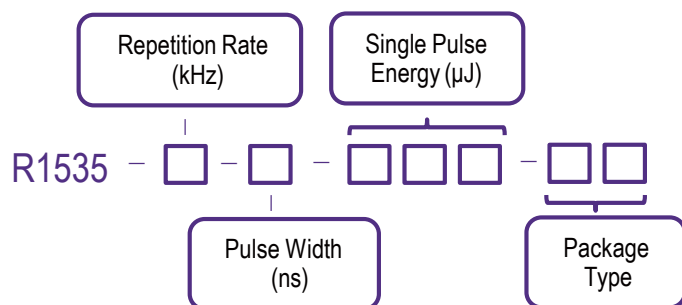


Beam Profile

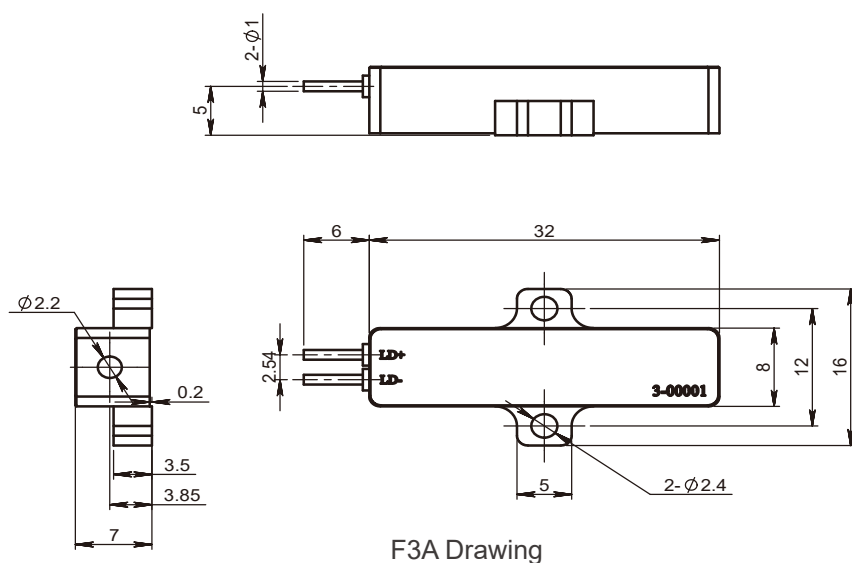
Order Information

Wavelength (nm)	Part Number	Repetition rate (Hz)	Pulse width (ns)	Pulse energy (μJ)	Dimensions (mm)
1535	R1535-0.01-6-500-F3A	10	6	500	32x8x7
	R1535-0.01-6-400-F5A	10	6	400	28x8x7

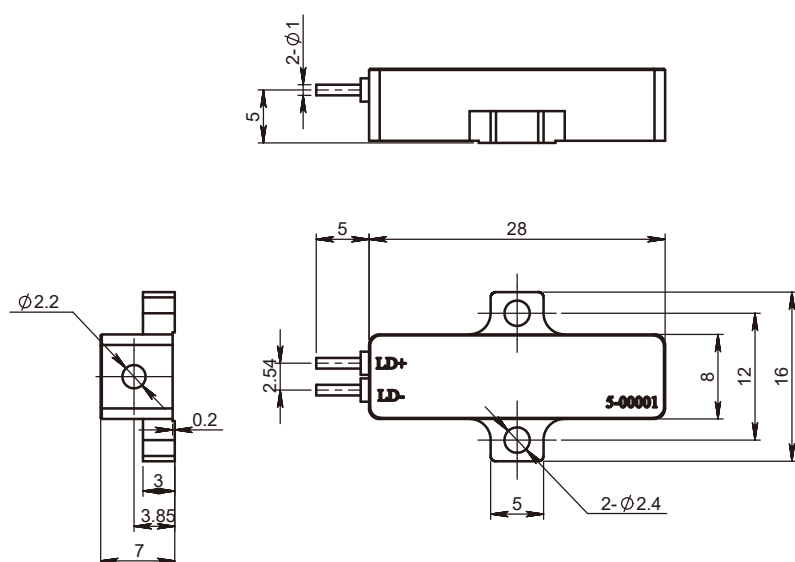
Part Numbering Schema



Mechanical Drawings (in mm)



F3A Drawing



F5A Drawing

