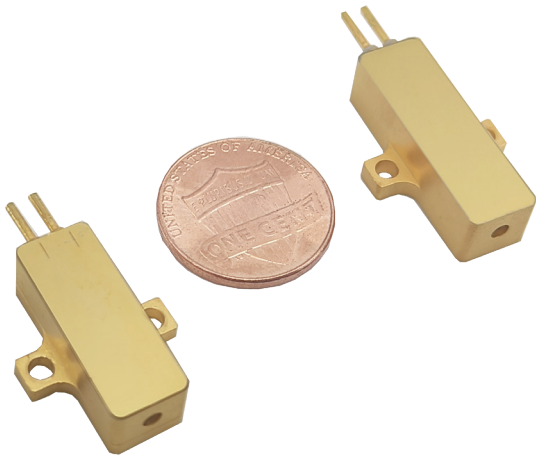


100~300 μ J 1535nm Microchip Laser Module



RealLight's 1535nm microchip laser modules operate in the eyesafe wavelength regime, have great advantages in applications including laser ranging and LiDAR. This series of laser modules feature no tail pulse, stable pulse energy and excellent beam profile. The integrated design of diode-pumped module and laser crystal brings convenience to installation and integration due to the compact size.

Technical Specifications

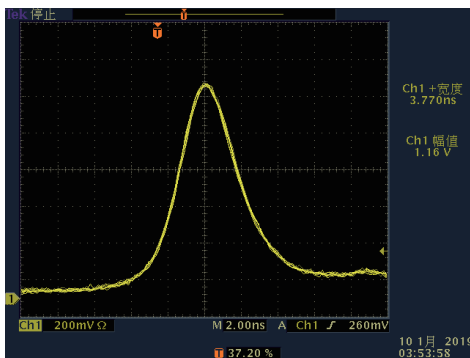
Wavelength (nm)	1535		
Pulse energy (μ J)	100	200	300
Pulse width (ns)	5		
Repetition rate (Hz)	10		
Operating current (A)	8	10	12
Beam full divergence (typ., mrad)	10		
Beam profile	TEM ₀₀		
Weight (g)	8	10	
Dimensions (W×H×L,mm)	21x8x7		25x8x7
Operation temperature (°C)	-40~65		
Storage temperature (°C)	-55~80		

Applications

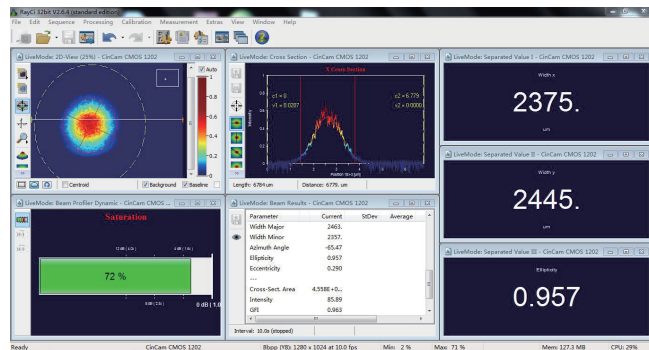
Laser range finder
Meteorological radar

Key Features

- ◆ Passively Q-Switched, Er:Glass
- ◆ Eye-safe
- ◆ Extremely light
- ◆ Super compact design
- ◆ Wide operating temperature range



Typical Pulse

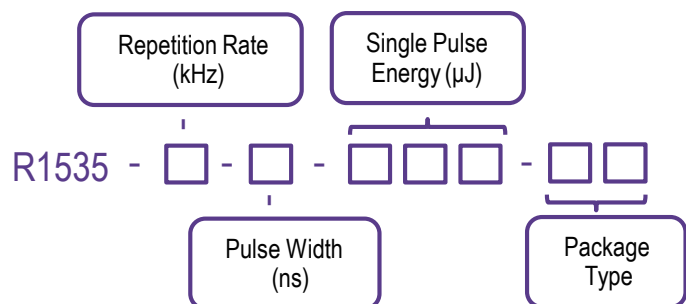


Beam Profile

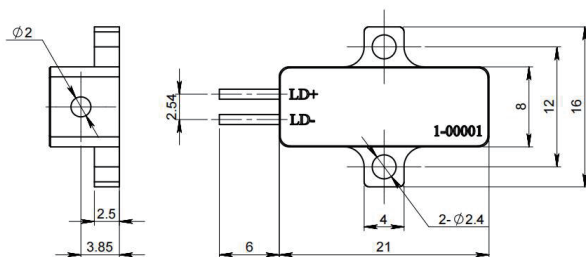
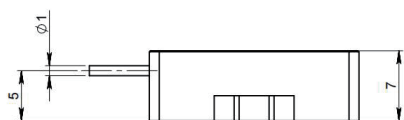
Order Information

Wavelength (nm)	Part Number	Repetition rate (Hz)	Pulse width (ns)	Pulse energy (μJ)	Dimensions (mm)
1535	R1535-0.01-5-100-F1A	10	5	100	21x8x7
	R1535-0.01-5-200-F1A	10	5	200	21x8x7
	R1535-0.01-5-300-F2A	10	5	300	25x8x7

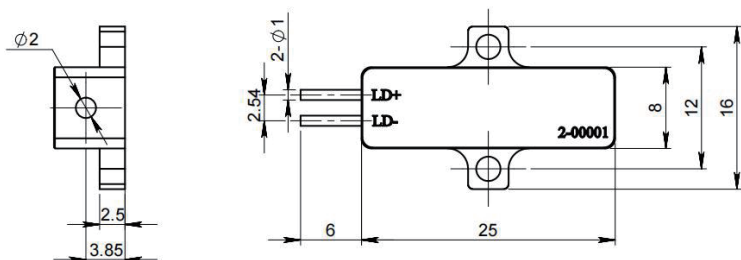
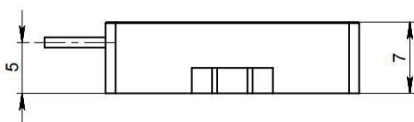
Part Numbering Schema



Mechanical Drawings (in mm)



F1A Drawing



F2A Drawing

